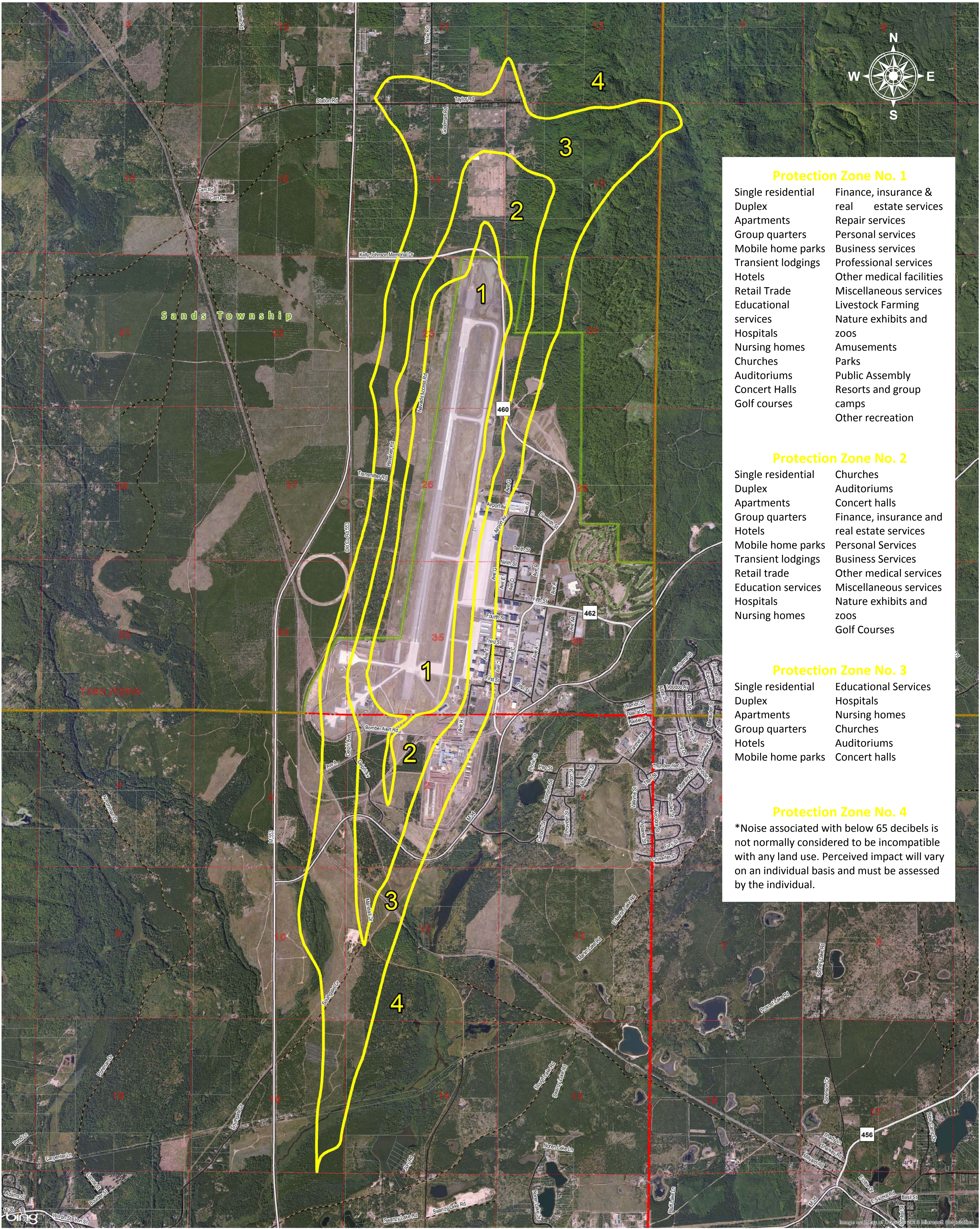


Sawyer International Airport Protection Zones



Protection Zone No. 1

- | | |
|----------------------|---|
| Single residential | Finance, insurance & real estate services |
| Duplex | Repair services |
| Apartments | Personal services |
| Group quarters | Business services |
| Mobile home parks | Professional services |
| Transient lodgings | Other medical facilities |
| Hotels | Miscellaneous services |
| Retail Trade | Livestock Farming |
| Educational services | Nature exhibits and zoos |
| Hospitals | Amusements |
| Nursing homes | Parks |
| Churches | Public Assembly |
| Auditoriums | Resorts and group camps |
| Concert Halls | Other recreation |
| Golf courses | |

Protection Zone No. 2

- | | |
|--------------------|---|
| Single residential | Churches |
| Duplex | Auditoriums |
| Apartments | Concert halls |
| Group quarters | Finance, insurance and real estate services |
| Hotels | Personal Services |
| Mobile home parks | Business Services |
| Transient lodgings | Other medical services |
| Retail trade | Miscellaneous services |
| Education services | Nature exhibits and zoos |
| Hospitals | Golf Courses |
| Nursing homes | |

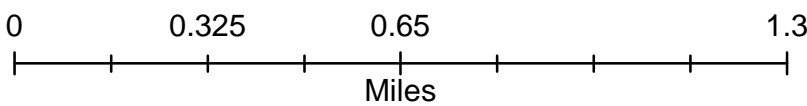
Protection Zone No. 3

- | | |
|--------------------|----------------------|
| Single residential | Educational Services |
| Duplex | Hospitals |
| Apartments | Nursing homes |
| Group quarters | Churches |
| Hotels | Auditoriums |
| Mobile home parks | Concert halls |

Protection Zone No. 4

*Noise associated with below 65 decibels is not normally considered to be incompatible with any land use. Perceived impact will vary on an individual basis and must be assessed by the individual.

	Zone Number	Sound Level (decibels)
Airport Protection Zones	1	75+
Townships	2	70-75
Township/Range Line	3	65-70
Sections	4	<65
Parcels		



Created 1.12.12 by Mqt. Co. RMDD

"The information and data provided herewith has been compiled from various sources, and is used by the County of Marquette for its own general purposes. The County does not warrant or guarantee that this information and data is accurate or current, nor does the County warrant or guarantee that this information and data is fit for any particular use or purpose. More specifically, the County warns that this information and data is not intended to be, and should not be, used to determine individual ownership, lot lines, or lines of occupation with respect to real estate. Any recipient of this information and data should independently verify its accuracy before relying on it for any purpose. The County of Marquette and its officers, agents, employees, boards, and commissions shall not be liable for any inaccuracy or omission in this information and data."